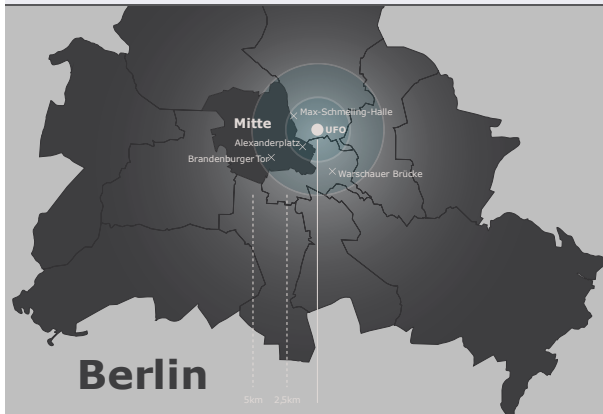




Postal & delivery adress

UFO inside Velodrom
 c/o Velomax Berlin Hallenbetriebs GmbH
 Paul-Heuse-Straße 26
 10407 Berlin
 Germany



Contact

E-Mail: booking@velomax.de
 Web: www.velodrom.de

General information

circumferential suspension of the concert area with black fabric

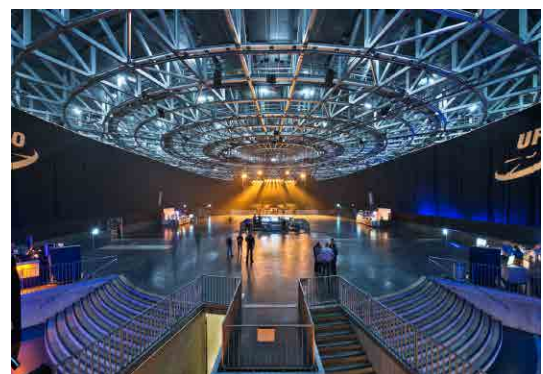
up to 7 catering stands
 big wardrobe capacities
 Hospitality possibilities

Backstage area 7 offices
10 VIP rooms
15 dressing rooms

Parking lots production 10 Truck/Bus carports
plus Automobile carports
 Production:
 existing : 1 x 125 A EE
1 x 63 A CEE
3 x 32 A CEE

Network:

- > 1.000Mbit / 1Gbit symmetrical via fiber optic connection
- > scalable up to 10Gbit
- > 50Mbit symmetrical or 100Mbit asymmetrical via LTE uplink as a backup solution
- > different VLAN available



Arena

Arena including safety stripe	68 m x 38 m ca. 2.718 m ²
Trucks can enter the event area	
Max. floor load of arena and vehicle entrance	Equivalent uniform load p=16,7 kN/m ²
Total ceiling load capacity	50 t (single point max. 1 t)
Ceiling height	13,00 m

Capacities

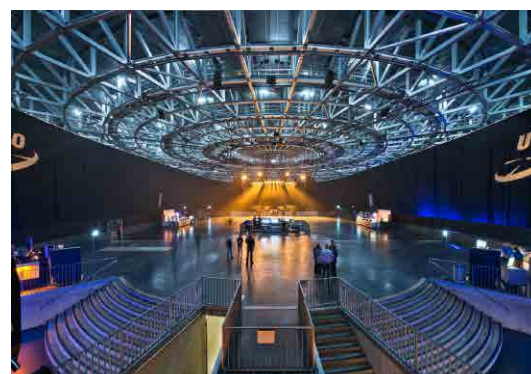
Standing audience inner arena	max. 5.000
divergent for larger stage dimensions, barrier, B-stage etc.	
Wheelchair places on platform	9 Places + 9 Companion

Power supply

Arena	over 1.800 kW
Ceiling	über 480 kW
Car park level U1	2 x 63 A CEE 6 x 32 A CEE
Standard power distribution	1 x USR 400A 1 x DSL 125A 1 x USL 63A

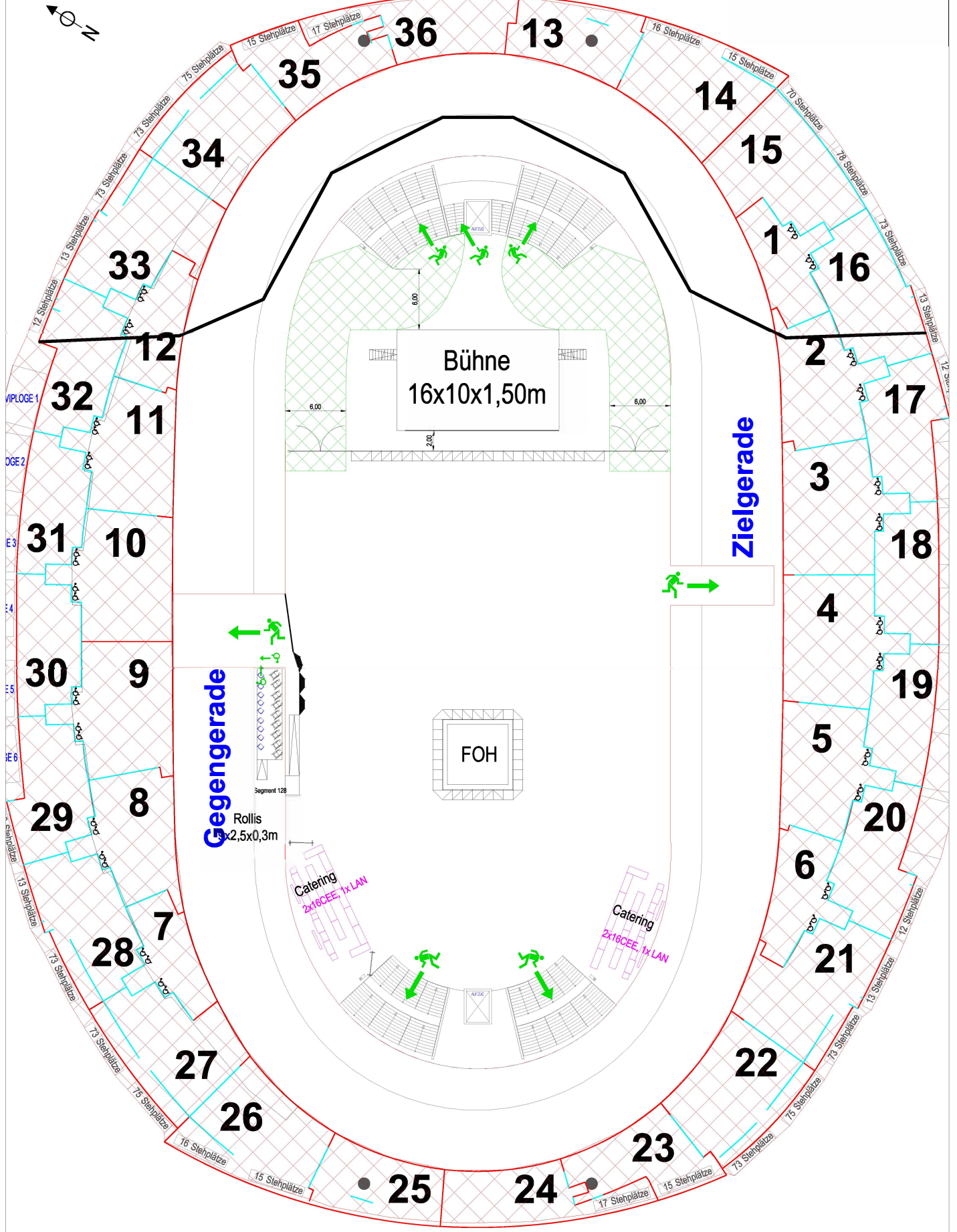
Stage

Mobile stage system with stairs, skirting & railings	
Stage height	1,00 m or 1,50 m



VELODROM

Haupteingang



Velomax Berlin Hallenbetriebs GmbH
Falkplatz 1 - 10437 Berlin
www.velomax.de

SITZPLÄTZE in Blöcken 1-36:
SITZPLÄTZE in VIP-Logen 1-6:
STEH-PLÄTZE im Innenraum:
STEHPLÄTZE in Umgängen:
Rollstuhlplätze:

GESAMTKAPAZITÄT: 5017

0 Projekt:
0
4999 Plan:
0 Velodrom
9+9 Plannr.: **Var1**
Datum:

UFO

Ebene E1-Arena

Bearb.:
gepr.:

letzte Fassung:

